

## Simplified component model for curved T-stub connection to concrete-filled steel tube with blind bolts and extensions

Huang Yao, Helen Goldsworthy, Emad Gad

The University of Melbourne

### Abstract

This paper describes a simplified component model developed to predict the behaviour of a blind-bolted T-stub connection to a concrete-filled steel tube with or without anchorage extensions within the tube. The components of the connection are considered as springs with certain mechanical properties, such as stiffness and strength. They are assumed to follow a bilinear, trilinear, or non-linear force-displacement relationship. The behaviour of the connection can be predicted by assembling the stiffness of the various components. Comparison of the analytical result with existing experimental data shows good correlation. The proposed model can be easily modified to describe the response of the overall beam-to-column connection coupled with other types of assemblies. The proposed method will efficiently serve practicing engineers in designing appropriate frame connections with blind bolts in regions of low to medium seismicity.

Keywords: Blind-bolted connections, Spring, T-stub, Cog extensions, Concrete-filled steel tube

### Introduction

Circular hollow sections (CHS) can be effectively used as columns in multi-storey building construction when combined with one-sided fastening techniques using blind bolts. With concrete filling, CHS provides smaller column footprints than other design solutions and enhances load carrying capacity under fire condition as the infilled concrete acts as a heat sink. A novel blind bolted connection has been developed at the University of Melbourne by adding cogged extensions to the conventional Ajax blind bolts. This type of connection can be used as moment resisting connections in composite steel frame building for regions of low to medium seismicity with great efficiency (Goldsworthy and Gardner 2005 & 2006). A typical blind bolted T-stub connection to the concrete-filled steel tube is shown in Figure 1.

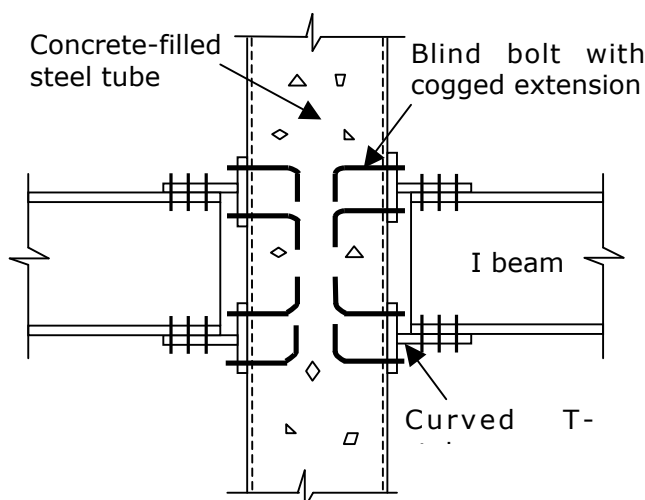


Figure 1: A typical blind-bolted T-stub connection

This paper illustrates a spring-stiffness component model developed to predict the behaviour of blind-bolted T-stub connection between steel beams and concrete-filled circular columns. In the model, the connection components are treated as spring with predefined characteristic such as stiffness and strength. By assembling the characteristics of individual components, the complex response of the joint can be predicted in a reasonably simple way.

### **Idealisation of blind-bolted T-stub connection**

The principal of spring-stiffness (component) models is based on dividing the joint into its basic elements as springs with defined mechanical characteristics (i.e. strength and stiffness). Components of the joint are simulated by individual springs with known stiffnesses which are assumed to follow a predefined force-displacement relationship. For simplicity (see Figure 2), an equivalent single spring stiffness,  $K_t$ , is used to represent the stiffness of all components in the tension zone, whilst the compression zone is defined by a separate spring,  $K_c$ . The tension zone comprises blind bolt stiffness ( $K_b$ ), curved endplate stiffness ( $K_p$ ), cogged extension stiffness ( $K_x$ ), and membrane stiffness of circular hollow section ( $K_m$ ). An idealized representation of the T-stub connection joint is shown in Figure 3.

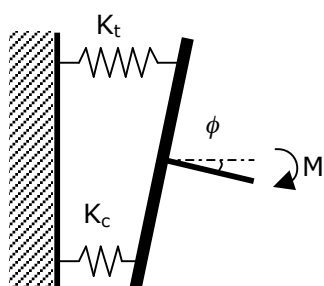


Figure 2: An overall spring model

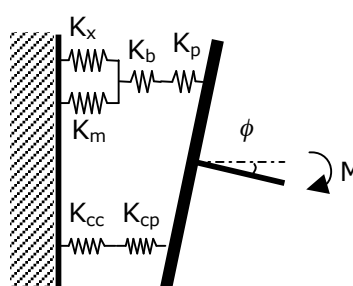


Figure 3: Various spring assembly

### **Simplified model of the T-stub onnection**

#### **Overall joint**

The global rotational stiffness,  $S_j$ , of the joint can be determined for any given moment based on the assembled stiffness,  $K_t$ , of all components acting in the tension zone, and  $K_c$  in the compression zone. Therefore, the overall stiffness of the joint can be expressed as:

$$\frac{1}{S_j} = \frac{1}{S_t} + \frac{1}{S_c} \quad (1)$$

$$\frac{1}{S_j} = \frac{1}{K_t \cdot z^2} + \frac{1}{K_c \cdot z^2} \quad (2)$$

where

$S_j$ : global rotational stiffness of the beam-circular column joint

$S_t$ : joint rotational stiffness in the tension zone

$S_c$ : joint rotational stiffness in the compression zone

$z$ : distance from the center of rotation to location of equivalent tension spring

Therefore, the rotation of the joint, at any given moment,  $M$  can be expressed as:

$$\phi = \frac{M}{S_j} \quad (3)$$

where

$\phi$ : rotation of the joint

### Equivalent spring in the tension zone and compression zone

The overall stiffness of the components in the tension zone can be expressed as:

$$\frac{1}{K_t} = \frac{1}{K_p} + \frac{1}{K_b} + \frac{1}{K_x + K_m} \quad (4)$$

In a similar way, the overall stiffness of the components in the compression zone can be expressed as:

$$\frac{1}{K_c} = \frac{1}{K_{cc}} + \frac{1}{K_{cp}} \quad (5)$$

### Behaviour of the connection components

In order to determine the overall stiffness and capacity of the connection, the response of the individual components must be defined.

#### Blind bolt behaviour

##### *Snug tight condition*

The blind bolts are considered to be subjected to direct tensile force in isolation. By applying the principles of Hooke's law, the elastic stiffness of the bolt can be expressed as:

$$K_b = \frac{A_s \cdot E_b}{L_b} \quad (6)$$

where

$A_s$ : blind bolt shaft area

$E_b$ : modulus of elasticity of blind bolts

$L_b$ : bolt elongation length

The bolt elongation can be obtained from the following relationship.

$$L_b = t_{ep} + t_{tb} + 2 \cdot t_w + t_{bh} \quad (7)$$

where

$t_{ep}$ : thickness of the curved endplate

$t_{tb}$ : thickness of the tube wall

$t_w$ : thickness of the split washer

$t_{bh}$ : thickness of the blind bolt head

##### *Pretension condition*

Until the pretension in the blind bolts is overcome, they are assumed to be infinitely rigid. The stiffness of the preloaded bolts is assumed to be  $1000K_b$ .

#### Curved endplate behaviour

When load is applied to the joint and the endplate is pulled away from the circular column face, it is assumed that the element is subject to pure bending. The endplate is considered to be a rigid fixed beam subject to a point load. The endplate is restrained against rotation at the horizontal lines of blind bolts. Figure 4 shows the idealisation of the endplate in the tension zone. From simple beam-deflection theory, the endplate stiffness in bending can be expressed as:

$$K_p = 24EI_{ep} / m^3 \quad (8)$$

$$I_{ep} = \frac{(R^4 - r^4)}{4} \left( \frac{\pi\alpha}{180} + \sin\alpha \cos\alpha \right) - \frac{80\sin^2\alpha(R^3 - r^3)^2}{\pi\alpha(R^2 - r^2)} \quad (9)$$

where

- R: radius of external surface of the curved endplate
- r: radius of internal surface of the curved endplate
- a: angle of endplate from side edge to its centreline
- e: distance of bolt row to endplate top and bottom line
- m: distance of bolt row to centre of the flange

The stiffness of the endplate is assumed to be elastic until the formation of plastic hinges.

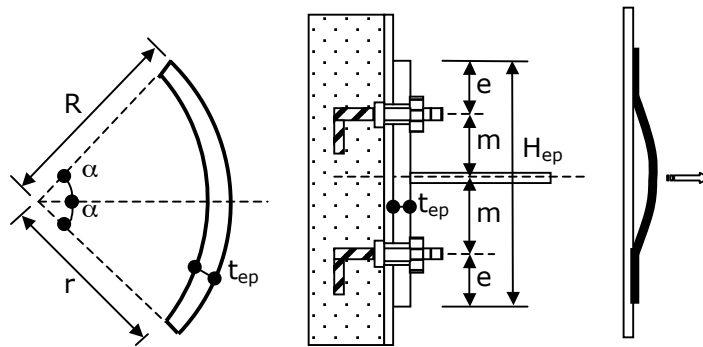


Figure 4: Curved endplate

### Cogged extension behaviour

The cogged extensions attached to the blind bolt head provide substantial anchorage to prevent the blind bolts from pulling out, and they also provide considerable stiffness. The performance of cogged bars anchored in concrete filled steel tubes has been studied in great detail by experimental and numerical methods (Yao et al. 2004). The circular hollow section can provide sufficient confinement to the concrete core. As the straight lead-in length is short due to the restriction imposed by the size of the tube and the installation allowance for the blind bolts, its effect on the pullout behaviour is ignored. The pullout resistance of the cog itself can exceed the tensile yield strength of the anchored reinforcing bar. A modified Soroushian model (Soroushian 1988) is proposed to suit the conditions of concrete filled steel tubes instead of reinforced concrete beam-to-column joints.

$$P = \begin{cases} P_1(\delta/\delta_1)^\lambda & \text{for } \delta \leq \delta_1 \\ P_1 & \text{for } \delta_1 < \delta \leq \delta_2 \\ P_1 + (P_3 - P_1) \frac{\delta - \delta_2}{\delta_3 - \delta_2} \geq P_3 & \text{for } \delta > \delta_3 \end{cases} \quad (10)$$

where

$$\delta_1 = 2.5\text{mm}, \delta_2 = 7.6\text{mm}, \delta_3 = 38.1\text{mm}, \lambda = 0.4$$

$$P_1 = 271(0.05d_b - 0.25), P_3 = 147(0.05d_b - 0.25)$$

$d_b$ : diameter of the reinforcing bar

Thus, the stiffness of the cogged extension can be derived from the above force-displacement relationship.

$$K_x = \frac{P}{\delta} \quad (11)$$

**Tube wall membrane behaviour**

The bearing of the split-washer on the inside of the tube wall, together with the bearing of the concrete strut from the cogged bend, activates membrane action in the circular tube wall. The load can be shared between the anchorage of the cogged bar and the tube wall membrane action. Initially, the tension load is mainly carried by the cogged bars and the effect of membrane action is small. The membrane action comes into play as the load increases. The ratio of tension load taken by membrane action to the total tension load eventually builds up to 35% of the total load. The membrane action incurred in the tube wall is located at the band of the endplate and adjacent strips to both ends. The stiffness of membrane action in the tube wall can be estimated as:

$$K_m = \frac{1.35EH_{ep}t_{tb}}{\pi(r + 0.5t_{ep})} \quad (12)$$

where

E: modulus of elasticity of the steel

H<sub>ep</sub>: height of the end-plate as shown in Figure 4

**Endplate bearing on the tube** The stiffness of the T-stub in the compression zone can be estimated by idealising it as a curved plate subject to a uniform compressive force from the beam over the whole depth of the endplate. The stiffness of curved endplate and associated tube wall bearing on the concrete core can be expressed as:

$$K_{cp} = \frac{\pi E \alpha H_{ep} r}{180(t_{ep} + t_{tb})} \quad (13)$$

**Infilled concrete subject to compression** The compression resistance from the concrete core is based on the assumption that the compression force applied is distributed across the depth of the endplate and the tube wall is assumed to act as a bearing plate on the concrete. The compression force from the endplate is dispersed to the centreline as shown in Figure 5. The stiffness of the concrete in the compression zone can be expressed as:

$$K_{cc} = \frac{\pi E_c \alpha (H_{ep} + 2t_{tb})}{180} \quad (14)$$

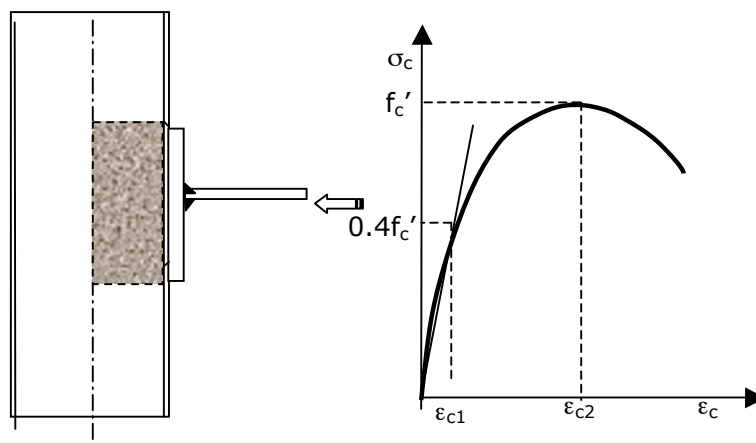


Figure 2: Infilled concrete subject to compression

**T-stub tension test**

A full scale T-stub connection representing an interior beam-to-column joint has been tested. The specimen consisted of a 323.9 x 6.0 mm circular hollow section of grade 350

with infilled concrete of 45 MPa characteristic compressive strength, two curved endplates (grade 300) of 20 mm thickness, and associated flared flanges (grade 250) of 16 mm thickness. The endplates were fastened to the tube with 16 mm diameter Ajax blind bolts, which had a minimum tensile strength of 800 MPa and yield strength of 640 MPa. Cogged extensions were provided to the head of the blind bolts by using N type reinforcing bars of grade 500 MPa. The specimen achieved a maximum tensile load of 690 kN while it failed due to the weld fracture at the middle bolt of the top T-stub. The load versus displacement is provided in Figure 6.

### Validation of the simplified model

#### Initial stiffness and secant stiffness

Two load cases were modelled at tension loads of 160 kN and 600 kN to obtain the initial stiffness and secant stiffness respectively. The stiffness of the various components is listed in Table 1. The comparison between the experimental result and analytical result for the tension load versus outwards displacement is shown in Figure 6. The proposed model predicts closely the initial stiffness and secant stiffness of the blind-bolted T-stub connection. However, the model is unavoidably approximate because the behaviour of blind-bolted T-stubs is highly nonlinear, which is due to mechanical and geometrical nonlinearity and to complex contact phenomena. Nevertheless, the application of the simplified component model provides satisfactory results.

Table 1: Spring stiffness for various components

	$K_b$ (kN/mm)	$K_p$ (kN/mm)	$K_x$ (kN/mm)	$K_m$ (kN/mm)	$K_t$ (kN/mm)	$K_{cc}$ (kN/mm)	$K_{cp}$ (kN/mm)	$K_c$ (kN/mm)	$S_j$ (kNm/rad)
160kN	913000	13653	411.3	913.7	1206	8252	276948	8013	94341
600kN	913	13653	139	913.7	472	8252	276948	8013	40117

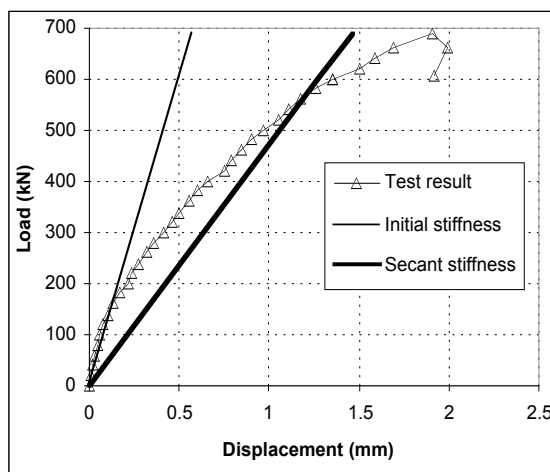


Figure 6: T-stub connection test

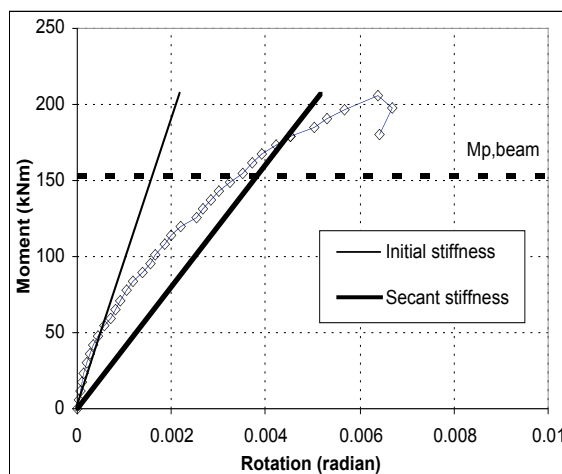


Figure 7: Moment-rotation curve

#### Moment-rotation curve

Behaviour of a beam-to-column connection can be conveniently represented by a moment-rotation curve (CEN 2005). A moment-rotation relationship has been determined for a concrete-filled circular column with diameter of 323.9 mm and a thickness of 6 mm connected to a steel universal beam of 310UB 40.4kg/m through the double split T connection shown in Figure 7. This represents a moment-resisting connection in a low-rise frame with a beam span of approximately 6 m. The design is based on capacity design principles so that the beam will reach its plastic moment capacity whilst the connection remains strong and stiff.

## **Conclusions**

A simplified spring-stiffness model was presented for modelling the response of a curved T-stub connection with blind bolts and extensions. Joints were modelled by assembling the contributions of individual components. Separation of the joint into its main components allowed different force-displacement response models to be incorporated. The main parameters describing stiffness and capacity of the components were examined. The predicted behaviour of the joint was compared with the observation from the experimental test. There was good agreement between the analytical and the experimental results. The proposed component method can be employed to predict the behaviour of this type of blind-bolted T-stub connection while maintaining a relative ease of practical application.

## **References**

- CEN (2005). "Eurocode 3: Design of steel structures, Part 1-8: Design of joints", European Committee for Standardization.
- Gardner A. P. and Goldsworthy H. M. (2005). "Experimental investigation of the stiffness of critical components in a moment-resisting composite connection", *Journal of Constructional Steel Research*, Vol. 61, 709-726.
- Goldsworthy, H. and Gardner, A. P. (2006). "Feasibility study for blind-bolted connections to concrete-filled circular steel tubular columns." *Structural Engineering and Mechanics: An International Journal*, Vol.24, No.4, Nov 2006.
- Soroushian P., Obaseki K., Nagi M., and Rojas M. C. (1988). "Pullout behaviour of hooked bars in exterior beam-column connections", *ACI Structural Journal*, Title no. 85-S28, pp169-276.
- Yao H., Goldsworthy H. M., and Gad E. F. (2004). "Anchorage of critical elements in a moment-resisting steel I beam-to-CFT column connection", *Proceedings of the 2004 Conference of the Australian Earthquake Engineering Society*, Mt. Gambier, paper no.7.





## **About the authors:**

**Agus Abdulah** is doing his PhD at the seismology group, Research School of Earth Sciences, ANU. He finished his Bachelor and Master degrees at the Department of Geophysical Engineering, Bandung Institute of Technology, Indonesia. He received several awards such as an Australian National University PhD Scholarship funded by an ARC grant, an Australian National University Tuition Scholarship, an ANU APRU DSN Travel Grant, a Postgraduate Scholarship from the Department of Education, Republic of Indonesia.

**Haider Al Abadi** is a PhD candidate at the University of Melbourne.

**Trevor Allen** has spent the past 3 years developing ground motion prediction equations for the Australian crust at GA. He is currently working at the USGS in Golden CO on the PAGER (Prompt Assessment of Global Earthquakes for Response) system. PAGER is an automated global alert system being developed to rapidly assess the severity of damage caused by an earthquake to provide an estimate of the impact of any given event.

**Michael Asten** is a part-time Professorial Fellow at Monash University and founding member of the Centre for Environmental and Geotechnical Applications of Surface Waves (CEGAS). He is also a consulting geophysicist and Partner with Flagstaff Geo-Consultants, Melbourne. He is collaborating with Geoscience Australia, University of Melbourne, the US Geological Survey, Nanyang University Singapore, and the University of Hong Kong in the development of passive seismic methods for geotechnical and site classification tasks.

**Gail Atkinson** is Professor of Earth Sciences at Carleton University, Ontario, Canada. Her research interests cover earthquake sources, seismic hazard analysis and ground motion studies. Gail is president of a Canadian multi-institutional research venture, which uses 90 portable geophysical laboratories to study the Earth's structure, resources and earthquake hazards.

**Natalie Balfour** received an MSc from Victoria University in Wellington NZ in 2004, after which she worked at GA for a year. She is now a postgraduate student in geophysics at the University of Victoria, Canada. She has conducted research in earthquake location and stress inversion using earthquake data.

**Wirtu Bayissa** is a PhD student in Civil Engineering at the University of Melbourne, Victoria 3010, Australia.

**Boult P.J.** Primary Industries and Resources of South Australia, Adelaide.

**Brad Carkin** obtained his Bachelor of Science, Geology, in 1982 from Central Washington University, Ellensburg, WA, and a Master of Science, Geology, in 1988 from Western Washington University, Bellingham, WA. He was a Physical Science Technician with the US Geological Survey from 1989 to 1998, and since then has been employed as a Geologist with the USGS.

**Dan Clark** Earthquake Geologist - Earthquake and Tsunami Hazard Project Geospatial and Earth Monitoring Division Geoscience Australia Joined Geoscience Australia in 2001 as an earthquake geologist in the Earthquake and Tsunami Hazard Project, Geospatial and Earth Monitoring Division after a stint with Connell Wagner following his PhD at the University of NSW in 1999.

**Maxime Claprood** is enrolled to do his PhD at Monash University after finishing a Masters in Mineral Engineering – Applied Geophysics from the École Polytechnique de Montréal in 2005 and his Bachelor's Degree there in Geological Engineering in 2003. He has worked as a research assistant at the Polytechnique de Montréal and before that at Imperial Oil. Maxime is fluent in French and Spanish as well as English.

**Geoffrey Cocks** graduated in Engineering from the University of Western Australia in 1971 and completed a Master of Science in Civil Engineering from Purdue University, Indiana in 1975. He has more than 30 years professional experience including more than 20 years in geotechnics. He is currently a Senior Principal with Coffey Geotechnics Pty Ltd and a Fellow of the Institution of Engineers, Australia.

**Clive Collins** is a graduate of the Universities of Melbourne and Queensland where he specialised in the use of controlled source seismology for crustal studies. He joined the Bureau of Mineral Resources (now Geoscience Australia) where he has undertaken seismic studies throughout Australia and Papua New Guinea, at scales from crustal and upper mantle structure to shallow high-resolution imaging of palaeoseismic faults. He is project manager of the Earthquake and Tsunami Hazards Project at Geoscience Australia.

**Neil Corby** is a GIS specialist responsible for post-disaster survey tools and techniques at Geoscience Australia.

**Mal Cox** is an Associate Professor at QUT and his research areas are largely within groundwater systems and environmental geochemistry. He has worked extensively throughout the Pacific Basin including on geothermal systems and their hydrogeochemistry.

**Phil Cummins** received a PhD in geophysics in 1988 at the University of California at Berkeley. He has worked at the ANU, U. Tokyo, and Japan Marine Science and Technology Center, before becoming leader of the Earthquake Hazard and Neotectonics Project at GA in 2002. He oversees GA's earthquake monitoring activities and earthquake hazard research.

**Russell Cuthbertson** has been involved with seismology in Australia for over 30 years. He is currently working out of the Brisbane office of ES&S and is responsible for seismic monitoring stations stretching from Newcastle to Cairns.

**Ken Dale** has been working in the Risk Research Group at Geoscience Australia since 2003. His research interests there include earthquake, tsunami and flood vulnerability model development. He received his Bachelor's degree in Civil Engineering from Monash University in 1996, and a PhD from the same institution in 2001 before undertaking a post-doctoral fellowship at Sojo University in Kumamoto, Japan, from 2001-2003.

**Vic Dent** is a geology graduate from the University of Sydney, from where he joined the Bureau of Mineral Resources, and moved into observatory geophysics. After a one year posting at Mawson Station, Antarctica, he was based at the Rabaul Volcanological Observatory for seven years. In 1983 he was posted to the Mundaring Geophysical Observatory, where he worked for 13 years and developed a keen interest in Western Australian seismology. He completed an MSc degree at the University of Western Australia in 1999, and is currently doing more post-graduate work there.

**Mike Dentith** is Assoc Prof. School of Earth and Geographical Sciences, the University of Western Australia. His research interests include processing and interpretation of potential field data, geophysical signatures of mineral deposits and Australian seismicity.

**Mark Edwards** leads engineering vulnerability model development at Geoscience Australia.

**Beatriz Estrada** is a post-graduate student at the School of Earth and Geographical Sciences, The University of Western Australia.

**Jeffrey Fisher** is a Catastrophe Risk Analyst with Risk Frontiers. He holds a BSc (Advanced Mathematics and Ancient History) from Macquarie University. His research activities include the impact of perceived errors in catastrophe models on reinsurance negotiations, floods and floodplain management and the later Roman emperors.

**Emad Gad** is an associate professor at Swinburne University of Technology and a senior lecturer at the University of Melbourne. His research interests include structural dynamics, FE modelling and steel connections.